



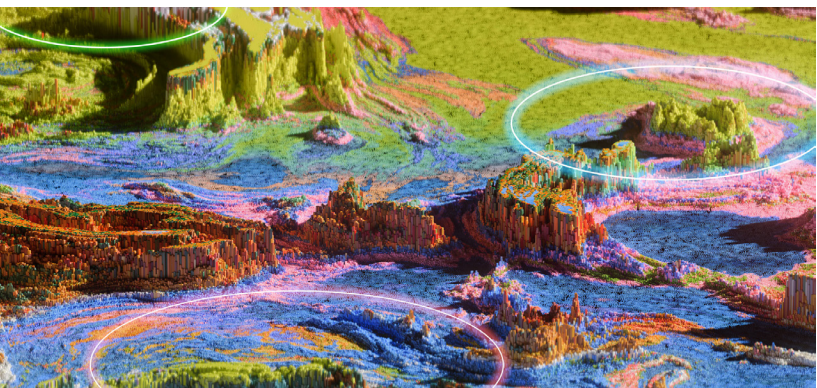
HII TIREM™

Optimized electromagnetic environment analysis software to predict network coverage and reduce spectrum interference

HII's Terrain Integrated Rough Earth Model (HII TIREM™) is the premier software tool for precise electromagnetic environment analysis, addressing the increasing demand for interference-free spectrum access. Backed by decades of expertise, HII delivers fast, accurate and scalable solutions to maximize coverage and connectivity while mitigating radio frequency interference (RFI).

Mission Application

- Predicts RF coverage for land mobile radios, point-to-point distances and sensor acquisition ranges from 1MHz into "spectrum frontiers" bands.
- Supports beyond-line-of-sight (BLOS) propagation analysis using knife-edge diffraction and troposcatter.
- Evaluates land-sea transitions, urban clutter and topographic features for accurate path propagation.
- Empowers decision-making with robust tools for spectrum monitoring and modeling across varied terrains.



Advantages

- **Precision RF Analysis:** Combines physics-based algorithms with sub-meter Lidar data for reliable RF analysis.
- **Adaptive Modeling:** Supports long-term fading models and atmospheric condition adjustments.
- **Broad Compatibility:** Complies with modern computing requirements, supporting MathWorks, Python, Windows and Linux platforms.
- **Flexible Terrain Analysis:** Includes empirical models for analysis without requiring detailed terrain data.

Features

- Utilizes deterministic modeling for power, density and field strength calculations, accounting for Fresnel interference and deep fading loss.
- Automatically selects and combines propagation models for land/sea and homogeneous terrain paths.
- Incorporates advanced modeling techniques, including atmospheric ray tracing with rain, dust and fog simulations.
- Stores signal data for post-analysis and integrates more than 1 million calculations for precision.
- Offers a spherical earth model for evaluating profile geometry and line-of-sight (LOS) paths.
- Provides flexible tools as MATLAB components and supports integration for dynamic analysis needs.



HII is a global, all-domain defense provider. HII's mission is to deliver the world's most powerful ships and all-domain solutions in service of the nation, creating the advantage for our customers to protect peace and freedom around the world. As the nation's largest military shipbuilder, and with a more than 135-year history of advancing U.S. national security, HII delivers critical capabilities extending from ships to unmanned systems, cyber, ISR, AI/ML and synthetic training. Headquartered in Virginia, HII's workforce is 44,000 strong. For more information, visit: HII.com.

Contact: SpectrumSoftware@hii.com



hii.com/products